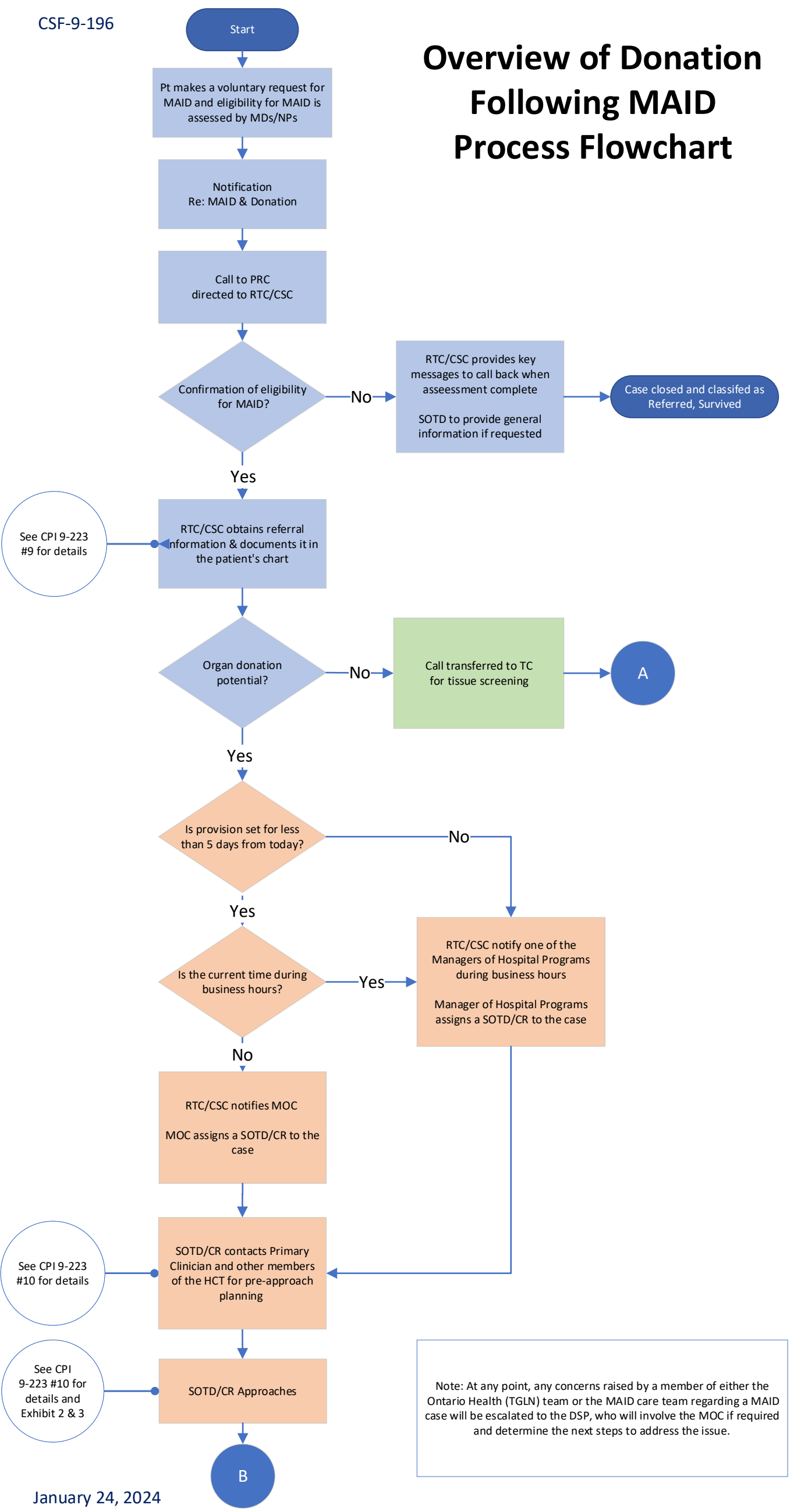
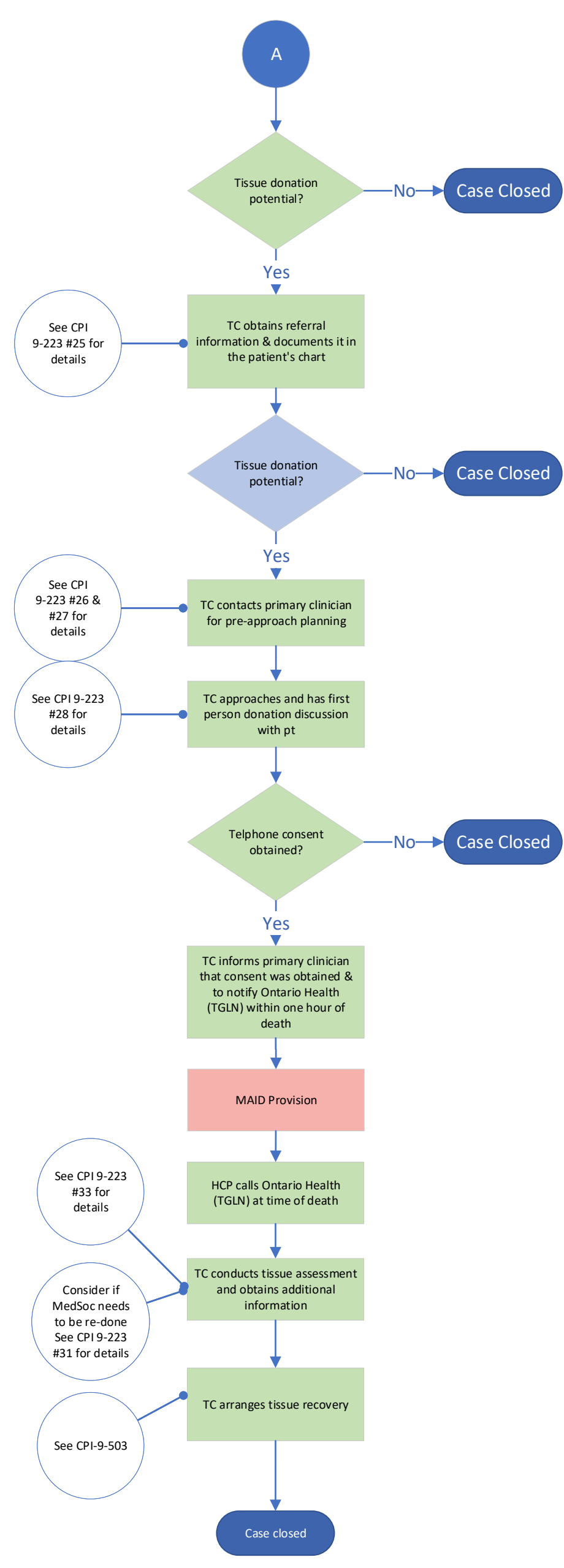


Overview of Donation Following MAID Process Flowchart



January 24, 2024



Acronym Legend	
CR	- Clinical Responder
CPI	- Clinical Process Instruction
CSC	- Clinical Service Coordinator
DCC	- Death determination by Circulatory Criteria
DSP	- Donation Support Professional
HCP	- Health Care Professional
HCT	- Health Care Team
MAID	- Medical Assistance in Dying
MedSoc	- Medical Social History Questionnaire
MOC	- Manager On-Call
MRP	- Most Responsible Physician
NP	- Nurse Practitioner
NPOD	- Non Perfused Organ Donation
SOTDC	- Specialist Organ & Tissue Donation
PRC	- Provincial Resource Center
Pt	- Patient
RTC	- Referral Triage Coordinator
TC	- Tissue Coordinator
TGLN	- Trillium Gift of Life Network

Note: At any point, any concerns raised by a member of either the Ontario Health (TGLN) team or the MAID care team regarding a MAID case will be escalated to the DSP, who will involve the MOC if required and determine the next steps to address the issue.

