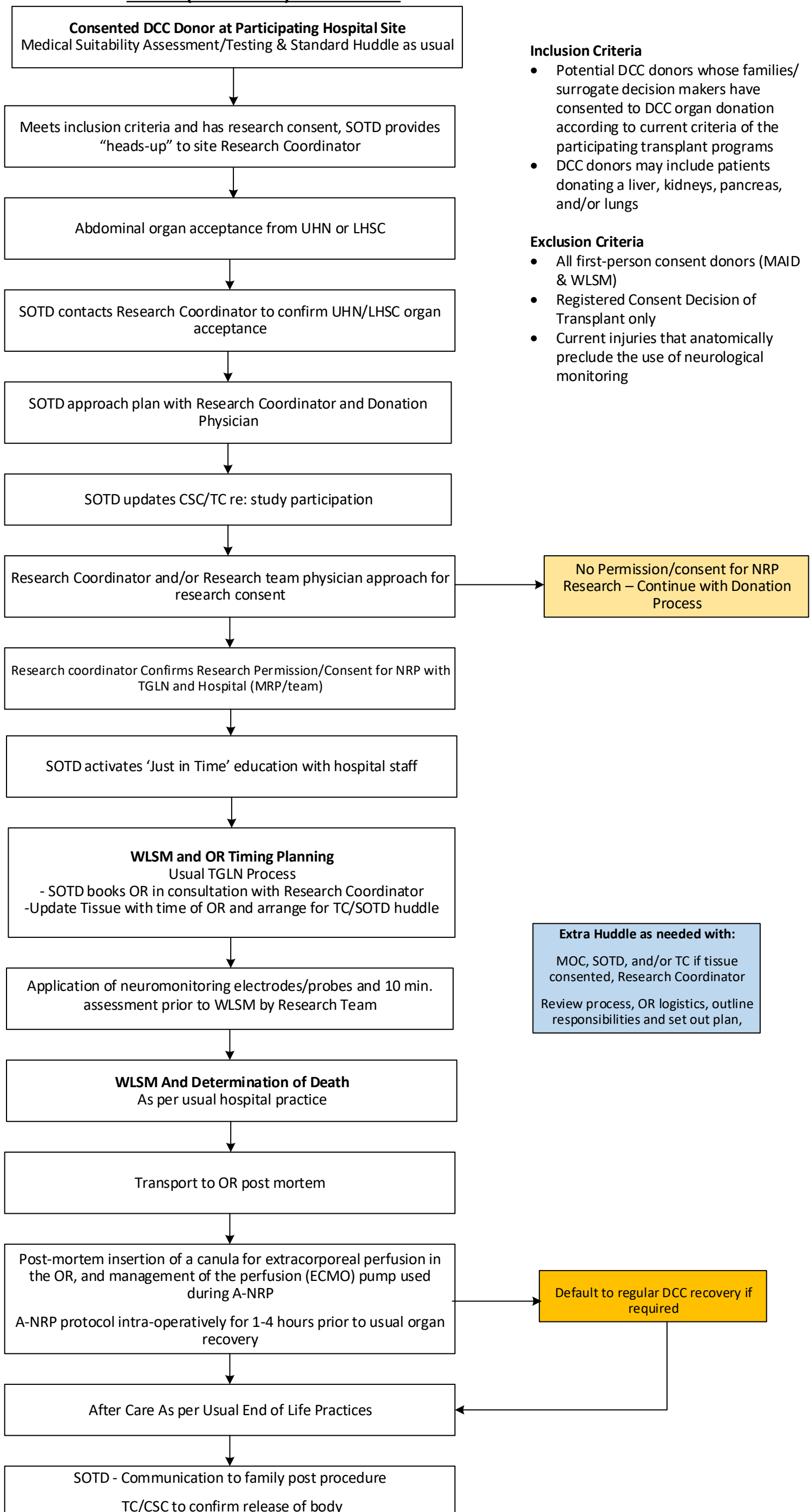


### A-NRP (CONCLUDE) Process Tree

**Participating Hospitals and Program**

- London Health Sciences Center (University and Victoria sites)
- Toronto Western Hospital



**Inclusion Criteria**

- Potential DCC donors whose families/ surrogate decision makers have consented to DCC organ donation according to current criteria of the participating transplant programs
- DCC donors may include patients donating a liver, kidneys, pancreas, and/or lungs

**Exclusion Criteria**

- All first-person consent donors (MAID & WLSM)
- Registered Consent Decision of Transplant only
- Current injuries that anatomically preclude the use of neurological monitoring

No Permission/consent for NRP Research – Continue with Donation Process

**Extra Huddle as needed with:**  
MOC, SOTD, and/or TC if tissue consented, Research Coordinator  
Review process, OR logistics, outline responsibilities and set out plan,

Default to regular DCC recovery if required